



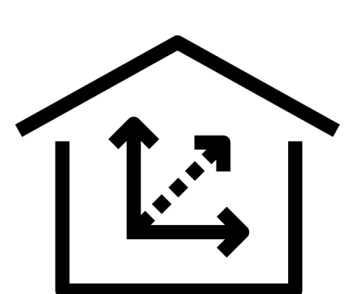
The Ashford

Lot 37B on Wood Crescent

\$1,252,000

MORTGAGE SAVER PROGRAM
For a limited time take advantage of a 2.8% fixed rate when you purchase this home.

Approximately \$37,000 of upgrades included in the purchase price.



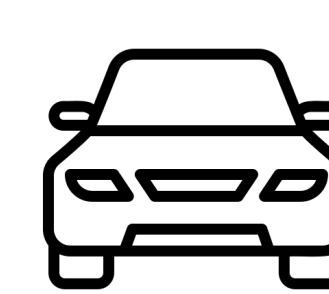
2526 sq.ft.



4 Beds

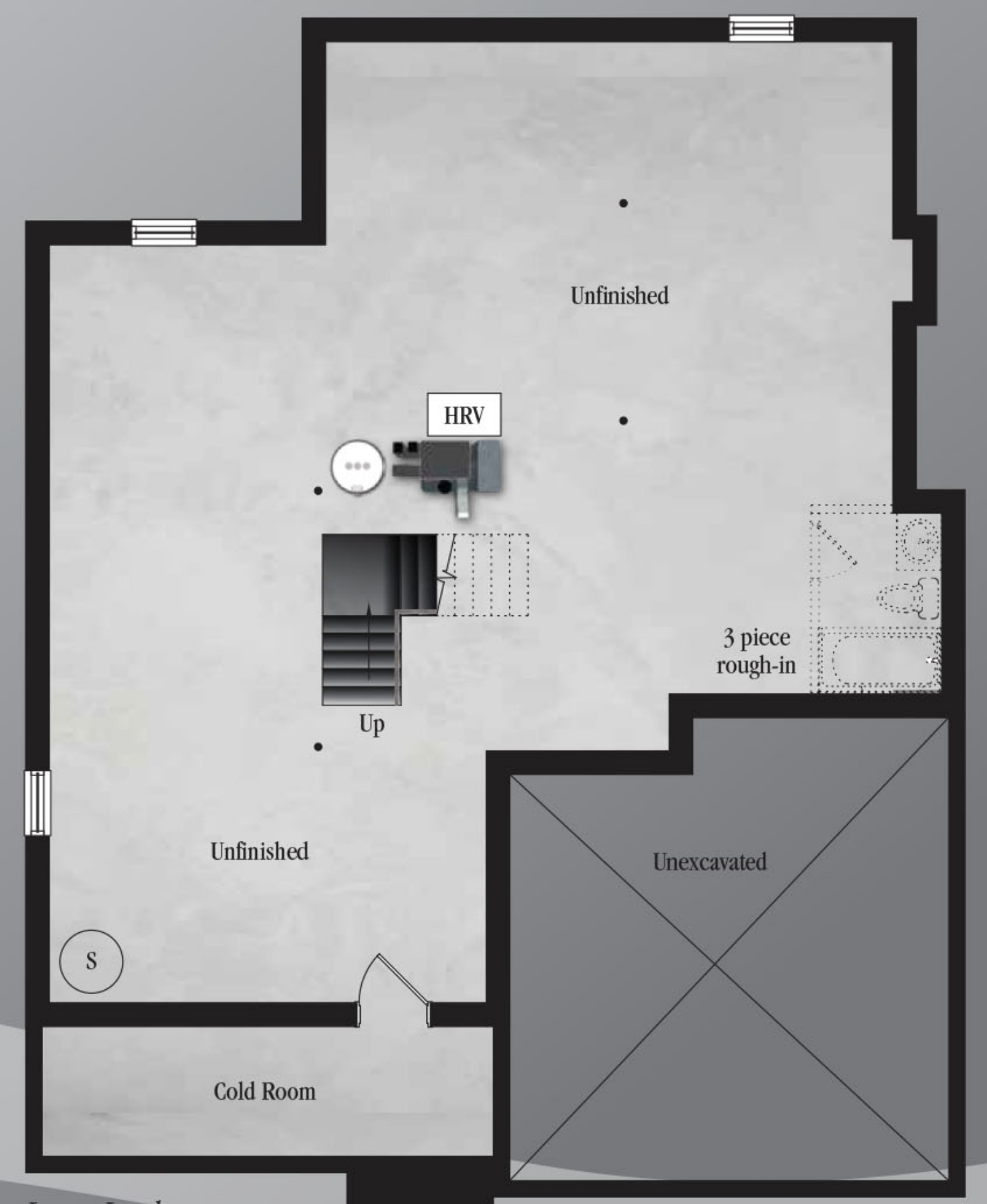
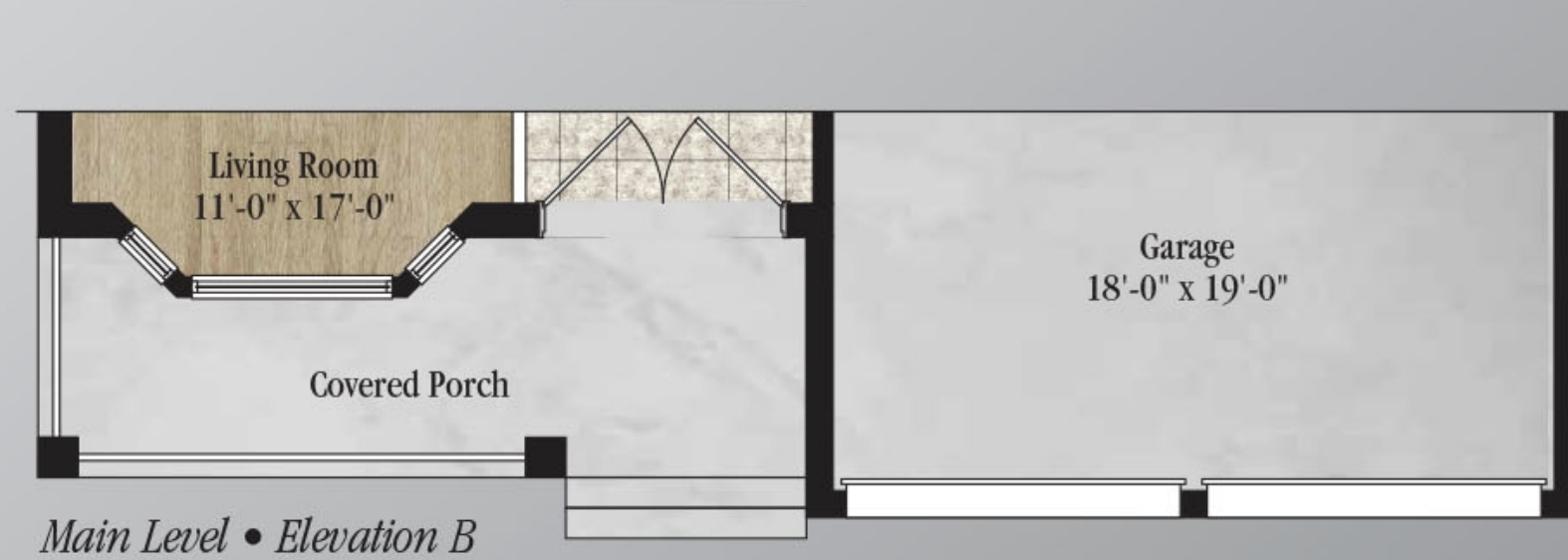


3.5 Baths



2 Garages

A traditional two-storey home, The Ashford A combines modern convenience with classic style. The eat-in kitchen is open to the living room and has direct access to the backyard, making entertaining a breeze all year round. And with four bedrooms tucked away upstairs, this home effortlessly balances privacy and connection.



All material, specifications and floor plans are subject to change without notice. All floor plans are approximate dimensions. Actual usable floor space may vary from the stated floor area. Colour representations are approximate and subject to change. ©San Diego Homes

Features include:

- ✓ ENERGY STAR certified home
- ✓ Full brick & stone exterior
- ✓ 9' ceiling on main with 8' interior doors
- ✓ Side door garage entrance
- ✓ Tall pour basement with egress window
- ✓ Additional full bath to Bedroom #2
- ✓ Air conditioner
- ✓ 4 cm granite or quartz throughout
- ✓ Select 12 x 24" floor tile upgrade