



# The Ashford

Lot 38B on Wood Crescent

## \$1,248,000

**MORTGAGE SAVER PROGRAM**  
 For a limited time take advantage of a 2.8% fixed rate when you purchase this home.

Approximately \$33,000 of upgrades included in the purchase price.



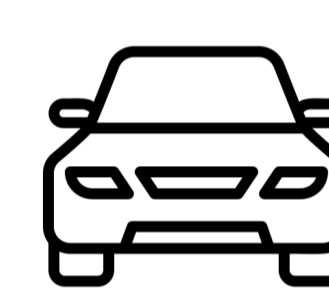
**2526 sq.ft.**



**4 Beds**

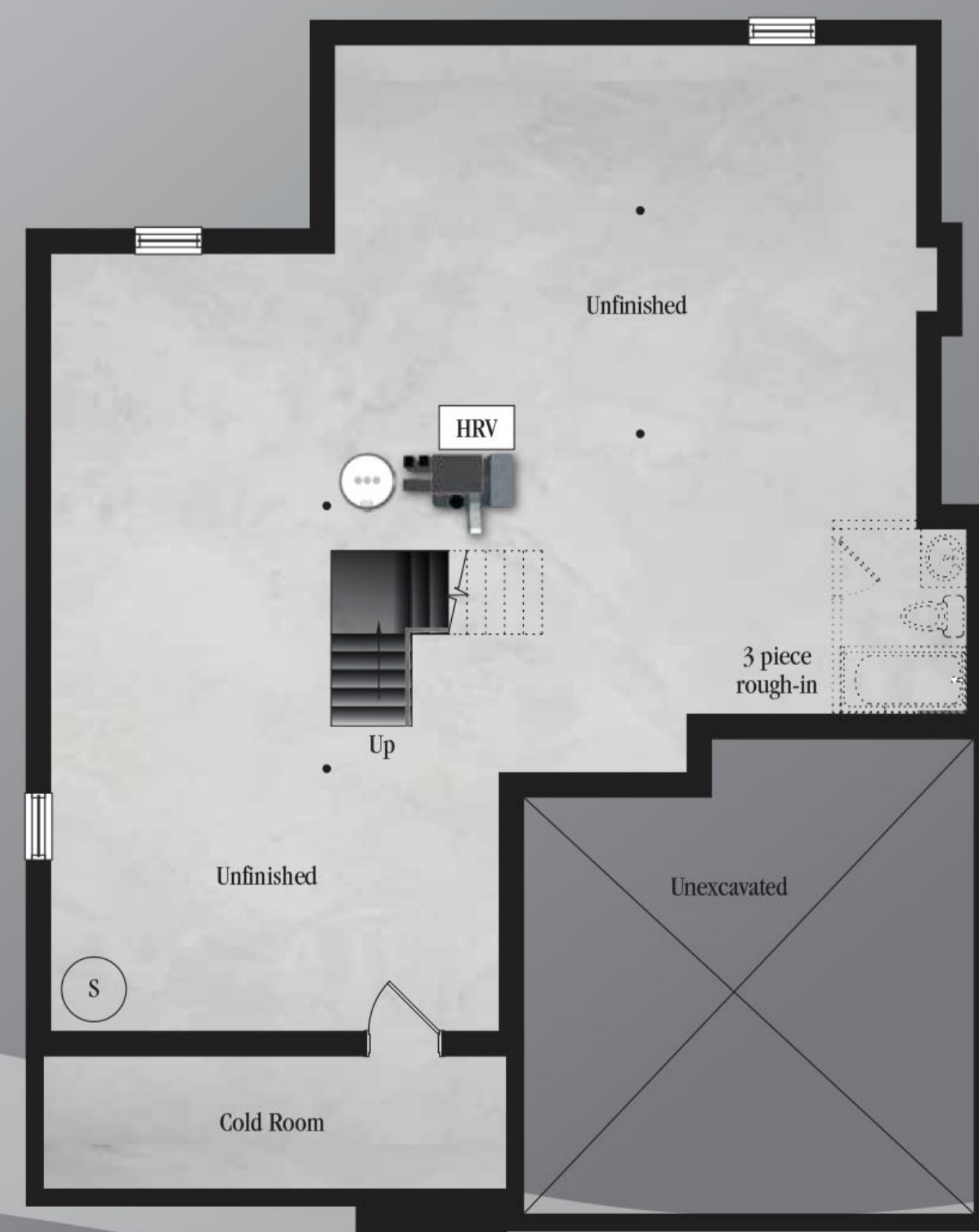


**2.5 Baths**



**2 Garages**

Whether you're looking to cozy up in the bay window with a good book or celebrate a special occasion, your living room in The Ashford B is both welcoming and comfortable. This home offers a separate family room for daily connections and quality time, plus a convenient main floor laundry room for an ideal blend of form and function.



All material, specifications and floor plans are subject to change without notice. All floor plans are approximate dimensions. Actual usable floor space may vary from the stated floor area. Colour representations are approximate and subject to change. ©San Diego Homes

### Features include:

- ✓ ENERGY STAR certified home
- ✓ Full brick & stone exterior
- ✓ 9' ceiling on main with 8' interior doors
- ✓ Side door garage entrance
- ✓ Tall pour basement with egress window
- ✓ Air conditioner
- ✓ 4 cm granite or quartz throughout
- ✓ Select 12 x 24" floor tile upgrade