



Remington

50' | Lot 1B, Conservation Lot, Walk-Out Basement Lot

PRICE REDUCTION
~~\$1,695,000~~
\$1,595,000

Approximately \$280,000 in lot premiums and upgrades included in the purchase price.



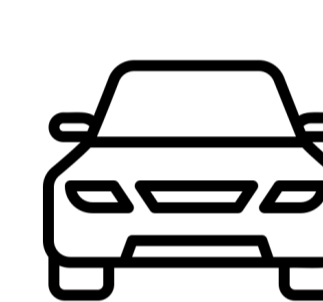
4060 sq.ft.



5 Beds

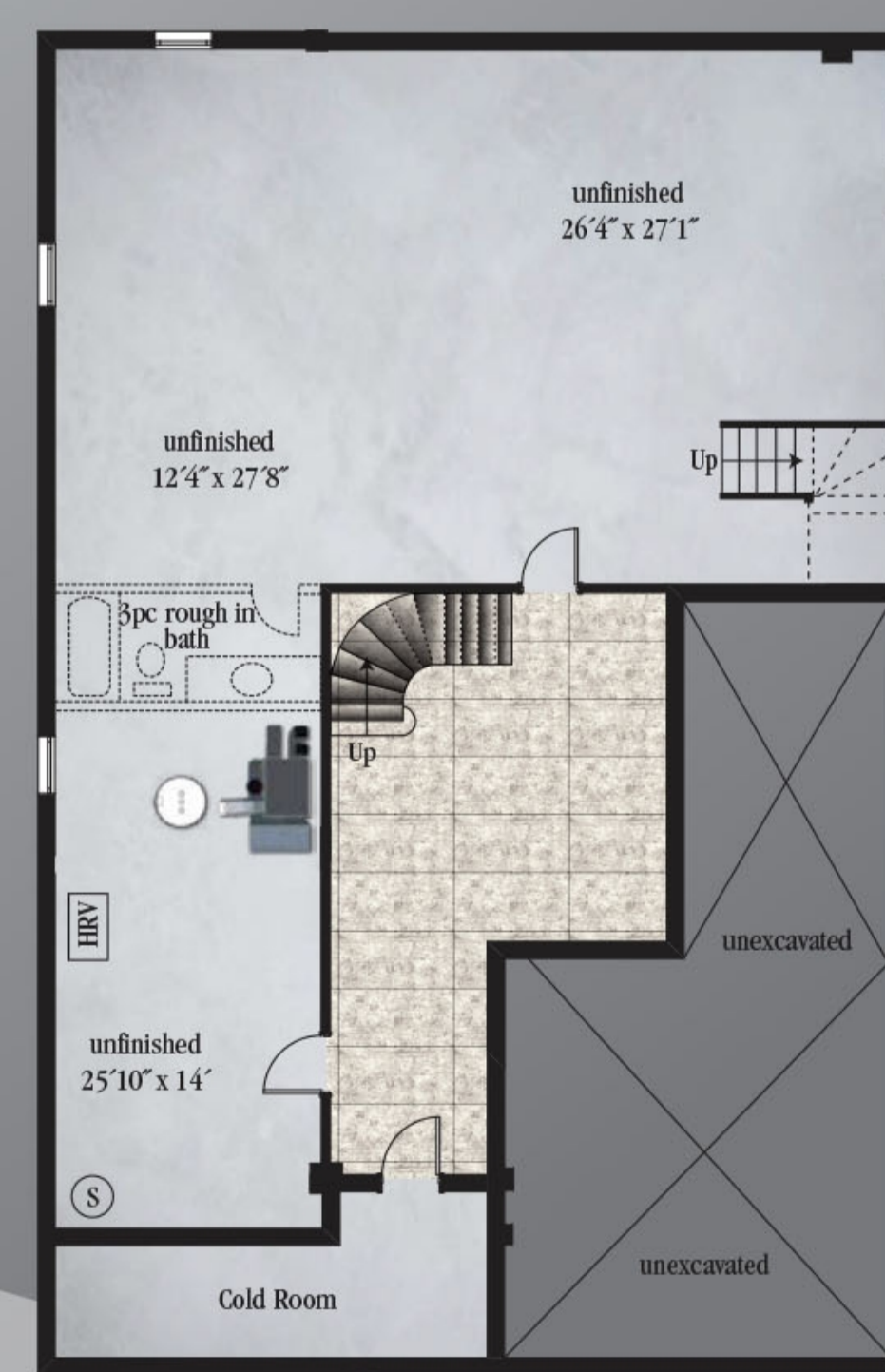
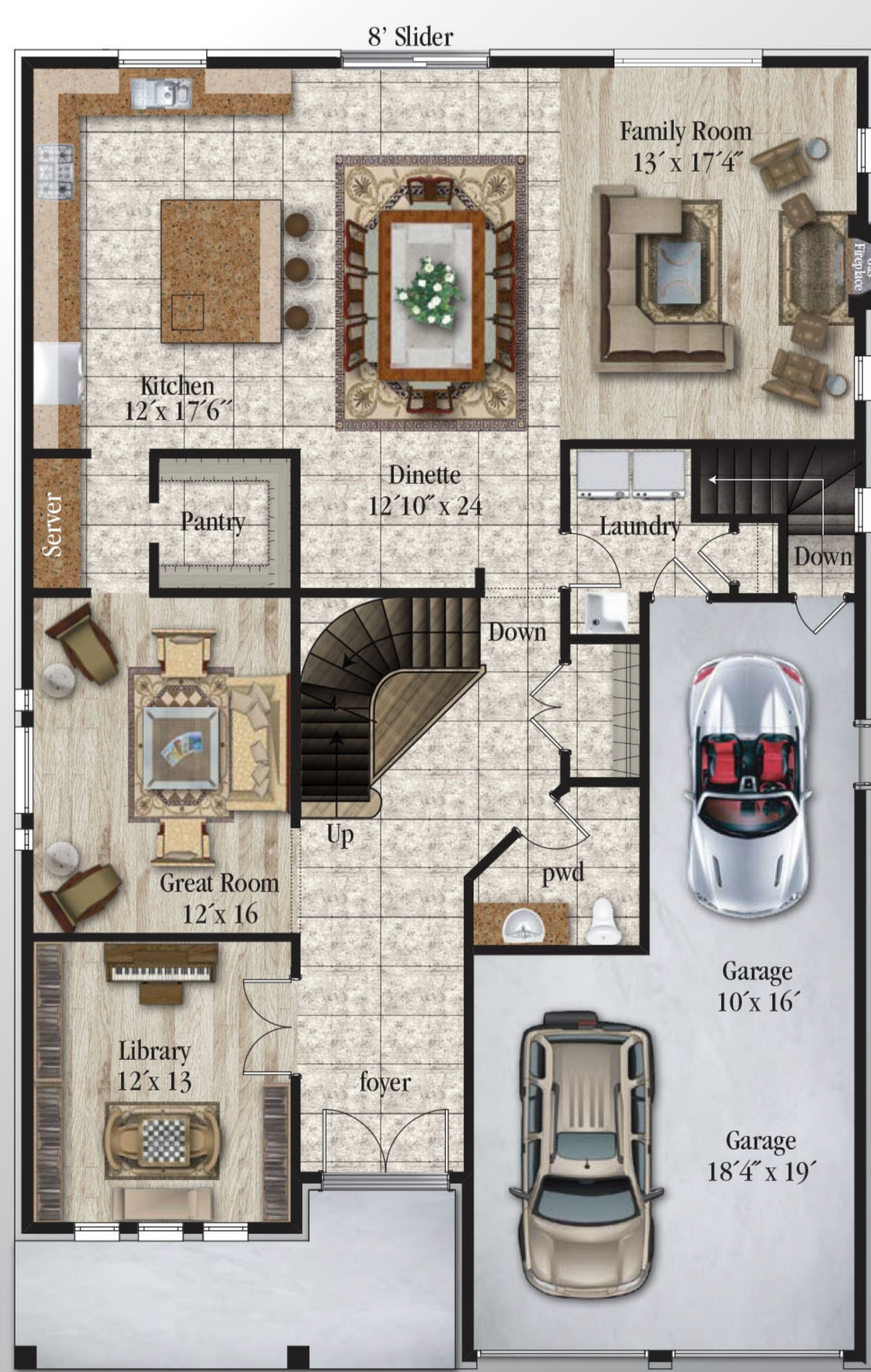


4.5 Baths



2 Garages

Imagine your Primary Suite, complete with a 5-piece ensuite, oversized walk-in closet, and spectacular views of conservation land from huge picture windows. The Remington is a remarkable two-storey home with sophisticated spaces including a private library or home office, a beautiful great room, and five bedrooms to fit the whole family.



All material, specifications and floor plans are subject to change without notice. All floor plans are approximate dimensions. Actual usable floor space may vary from the shaded floor area. Colour representations are approximate and subject to change. ©San Diego Homes

Features include:

- | | |
|---|---------------------------------------|
| ✓ ENERGY STAR certified home | ✓ Second-floor laundry |
| ✓ Full brick & stone exterior | ✓ Humidifier & air conditioner |
| ✓ High lift track on tandem garage | ✓ Upgraded thermostatic shower panels |
| ✓ Tall pour basement | ✓ Stacked cabinets in kitchen |
| ✓ 10' ceilings on main, 9' ceilings on second | ✓ Fridge, stove, dishwasher |
| ✓ 8' interior doors throughout | ✓ Smooth ceilings throughout |